

FRIDAY AWARDS & CHECK OUT INFORMATION



FRIDAY - JUNE 21

Awards & Instructor Meet n' Greet,
and Early Check-Out

SATURDAY - JUNE 22

Final Check-Out

CONTACT US

info@eihpc.com

eihpc.com

facebook.com/eihpc



FRIDAY AFTERNOON



We welcome parents and friends of campers to arrive starting at 12:45 pm on Friday to be part of the camper's eCademy for their Paddle Brand presentation as well as to watch their camper's lesson while meeting with the instructor. The camper's instructor will let you know how the week went, provide some feedback and answer questions you may have.

eCademy Schedule by Camper Group - eCademy is held in the Pavilion

1:00 pm - A, B, C

2:00 pm - D, E, F

3:00 pm - G, H, I

Riding Lesson Schedule by Camper Group - eCademy is held in the Pavilion

1:00 pm - D, E, F

2:00 pm - G, H, I

3:00 pm - A, B, C

PRO TIP - USE YOUR CAMPER'S FREE TIME TO PACK/CLEAN DORM AREA & MUCK STALL



CAMP ADDRESS

Great Jones County Fairgrounds, 700 N Maple St., Monticello, IA

Trailers will pull into the livestock gate entrance off of East 9th St. The gate off of East 8th St. will only be used for trailers and vehicles exiting the fairgrounds.

LARGE GROUP AWARDS WILL BE HELD AT 4:15 AT THE COVERED ARENA

All campers and guests of campers will gather at 4:15 pm at the covered arena for the large group awards, which includes and not limited to, **Most Improved Camper in each riding group, Sportsmanship, and Sue's Tie-Blanket Presentation.**

FRIDAY CHECK OUT



Those wishing to check out their camper on Friday after the large group awards, which begin at 4:15 pm, are welcome to do so beginning at about 5:00 pm. Camper's will need a **“Check Out Card”** that includes a list of things that must be completed and signed off before they can ‘officially check out’. **Any campers leaving on Friday night, must be completed with check out and off grounds by 7:30pm.**

SATURDAY CHECK OUT

Check out on Saturday begins at 7:30 am.

All campers must be checked out by 9:00 am Saturday.

CHECK OUT TASKS

- Strip out and completely clean out your horse’s stall. All manure and shavings need to be scooped/scrapped up and taken to the designated manure piles. A Barn Person will need to inspect the stall and sign off that the stall is clean.**

- Pick up and clean your dorm area. Throw out all garbage. Sweep, mop, or vacuum where needed. A Dorm Chaperone will sign off that this step is completed.**

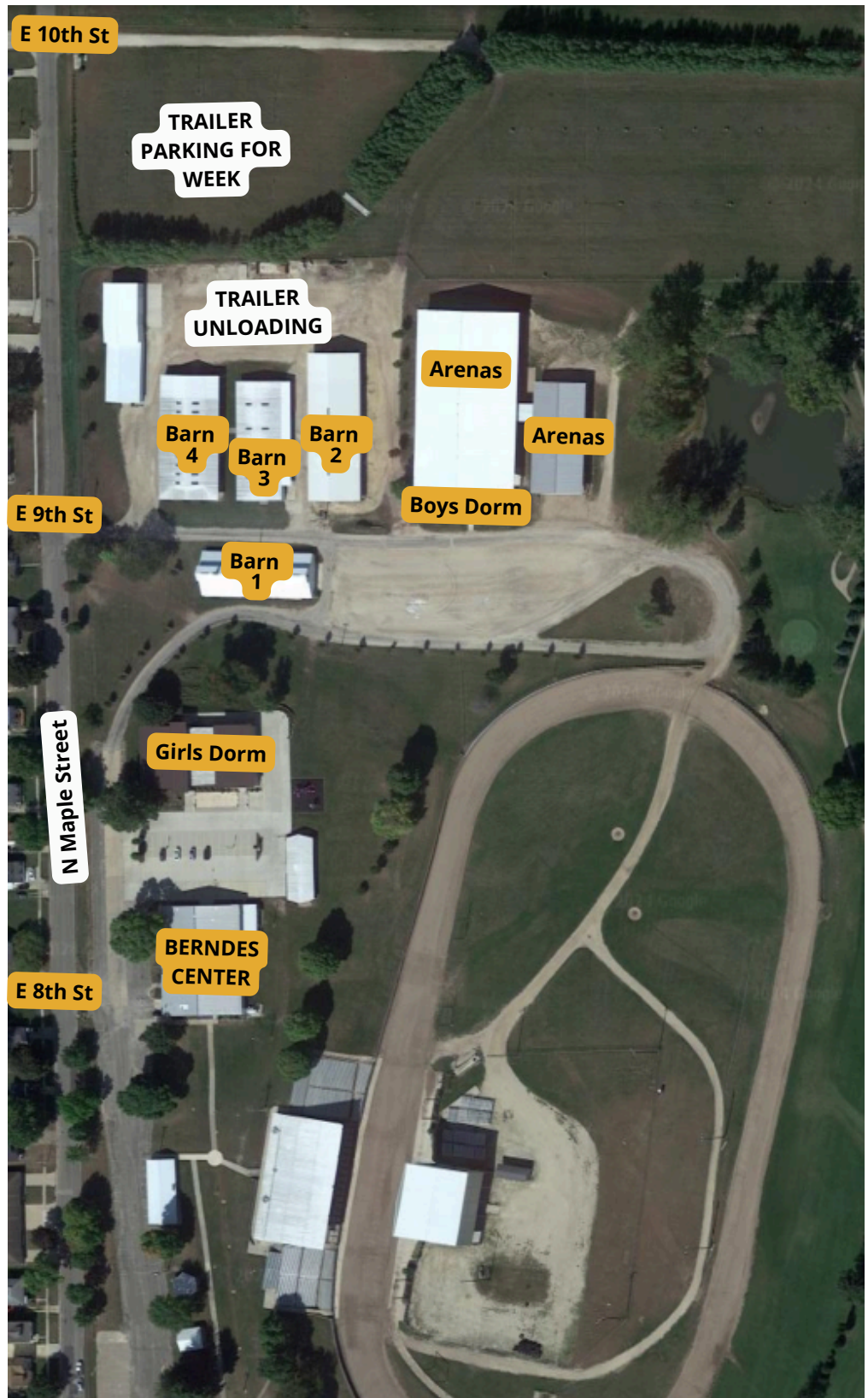
Once all the above is completed, come to the Mess Hall (Bernedes Center) to complete check out. You’ll receive camp photos if you ordered them, snack card refund if applicable, receive any other paperwork or items for your camper.

CAMP MAP 2024



**ENTER AT E 9TH ST
WHEN YOU ARRIVE AT
CAMP.**

**REMINDER: THE EXIT
FOR CAMP IS 8TH
STREET.**



CONTACTS DURING CAMP



**IF YOU HAVE ANY QUESTIONS OR CONCERNS,
PLEASE CONTACT ANY OF THE FOLLOWING BOARD MEMBERS.**

Nick Meyer (563-343-2670)

Matt King (563-543-0064)

Ben Urbain (563-599-8500)

Jason Burke (563-249-5124)

Katie Kotz (563-599-6528)

Brooke Balichek (319-269-3011)

Jessica Hingtgen (563-542-3418)

Sue Manternach (563-543-4355)

Michael Wolken (319-480-3178)